



House & Land Package:

**\$402,563**

Lot 1061 New Road, Jimboomba – Riverton Estate

**INCLUSIONS: EMERALD**

- 25 year structural guarantee
- Deal direct with the builder
- Flexibility when it comes to changes (pre-contract signing)
- Contract: fixed price site costs\*
- Roof: cement roof tiles
- Façade: brick veneer, render (*if applicable*), with multiple materials
- Ceiling insulation
- Kitchen bench tops: stone
- Ceiling fans: living areas & bedrooms
- Outdoor living area: under main roof & tiled floor
- Lighting package: LED downlights to living areas, fluoros to kitchen, bathrooms & garage
- Appliances: stainless steel
- Hotwater: Rheem 26 Metro Gas HWS
- Screens: Flyscreens to sliding windows & sliding doors (*excludes. Garage, stacker doors & bi-fold doors*)
- Wardrobes: White birch vinyl sliders with aluminium frames to bedrooms & line, walk in robe to main
- Tapware: chrome plate mixers & hand showers
- Remote control garage door
- Driveway: exposed aggregate
- Floor coverings: tile & carpet
- House cleaned by a professional cleaning service



**(200.6m<sup>2</sup>\*\*)**

BYRON 200

4 bed, 2 bath, 2 car

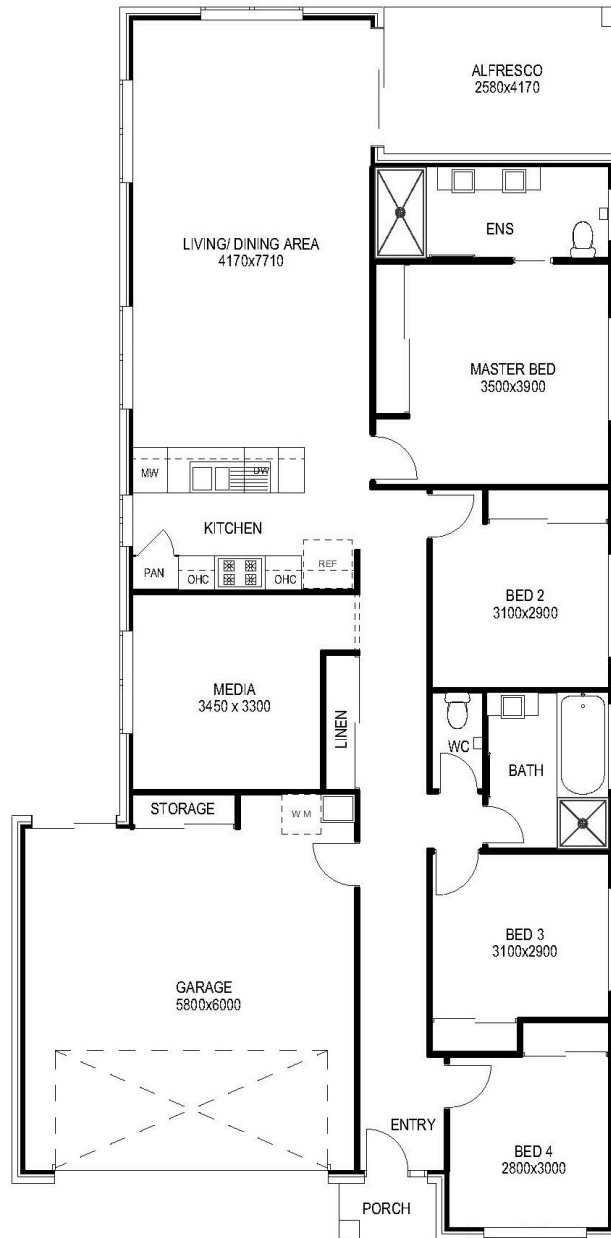
Land Size: 501m<sup>2</sup>

**CALL: 0457 100 196**  
**[www.qcoasthomes.com.au](http://www.qcoasthomes.com.au)**

Illustrations and artist impressions are indicative only and should be used as a visual aid only. Price valid for 30 days  
 These drawings and designs are the sole property of Q Coast Homes Pty Ltd and must not be used, retained or copied without written permission.  
 \* Fixed price EXCLUDES "P" and "E" site conditions & rock.  
 \*\*All sizes are approximate and subject to Covenant & Council approvals.  
 Q Coast Homes Pty Ltd ABN 74 604 426 137 QBCC Lic. No. 1317177

# Byron 200

4 Bed, 2 Bath, 2 Car



Living:	146.2
Garage:	40.4
Alfresco:	10.8
Porch:	3.2
<b>TOTAL:</b>	<b>200.6m<sup>2</sup></b>
Width:	10.70
Depth:	21.66



Q Coast Homes Pty Ltd reserves the right to alter & change designs without notice prior to contract. Illustrations and artist impressions are indicative only and should be used as a visual aid only. \*All sizes are approximate. These drawings and designs are the copyright thereof are the sole property of Q Coast Homes Pty Ltd and must not be used, retained or copied without written permission.

ABN 74 604 426 137 QBCC 1317177